

Discover the

# SOUTHERN TRAILS

AUTO TOURS



© Jack Sorenson Fine Art, Inc. | [jacksorensonfineart.com](http://jacksorensonfineart.com)

Missouri « Arkansas « Kansas » Oklahoma » Texas  
Colorado « New Mexico « Arizona » Utah » Nevada » California

Discover America's  
Great Southwest!  
Go to [OCTA-Trails.org](http://OCTA-Trails.org)





GALVESTON



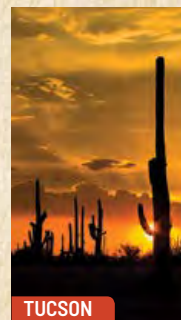
OKLAHOMA CITY



GRAND CANYON



©Jack Sorenson Fine Art, Inc. | jacksorensonfineart.com



TUCSON

## Welcome to America's Great Southwest

Where the sun shines most every day, and good times await at every turn. Where some of America's greatest cities and towns celebrate their unique heritage ... where trailside communities and scenic byways are gateways to adventure.

The Southern Emigrant Trails link the American Southwest together with a combination of destinations from Missouri, Arkansas, Kansas, Oklahoma and Texas to Colorado, New Mexico, Arizona, Utah, Nevada and California.

Today's trail travelers have the pleasure of following these historic trails, not by stagecoach, horseback or

covered wagon, but in the comfort of their own vehicles on today's modern interstate highways and primary roads ... roads that largely follow these legendary trails.

You can see spectacular sights like the Grand Canyon, the Rockies, the deserts and plains, and enjoy colorful multi-cultural events and experiences in the communities along these historic trails. This blending of cultures, history, and natural beauty provide the Great Southwest its distinctive flavor, whether it's a barbecue or fiesta under the stars ... or an early morning sunrise in the desert or mountains.

## GO ADVENTURING!



SAN ANTONIO



ROGERS



LAS VEGAS



SANTA FE



FORT WORTH



CEDAR CITY



GRAND CANYON



MONUMENT VALLEY



LAS VEGAS



FLAGSTAFF



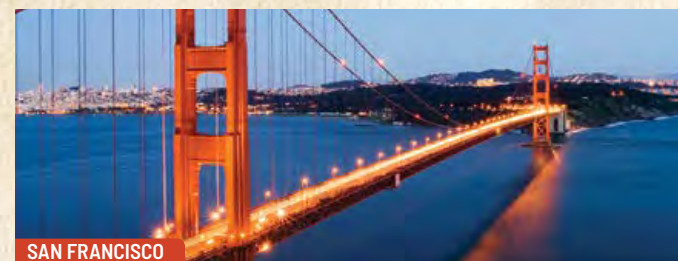
BAKERSFIELD



PHOENIX



SONOMA VALLEY



SAN FRANCISCO





### 1 The Butterfield Overland Trail

With the Gold Rush booming and California's population nearly doubling overnight, the U.S. Postal Service contracted with John Butterfield, proprietor of an express stagecoach company in Utica, New York to establish a year-round all-weather trail which became the Butterfield Overland Trail route.

The Butterfield route started in Tipton, MO and went south to Springfield and on to Rogers and Fort Smith, AR, then headed southwest to Oklahoma and across the Red River into Texas just above Fort Worth at Sherman. It then went west to El Paso and linked up with the express stage line from San Antonio. From El Paso, the route headed west on the Anza Trail to Tucson and Phoenix to Yuma, San Bernardino, Los Angeles, Bakersfield, Visalia, Fresno and San Francisco. The San Antonio Express continued west from Carrizo to San Diego. The 175 stage stops on the Butterfield were spaced 30-40 miles apart, and in the desert, 10-20 miles apart where water was in short supply. Teams of fast horses and mules were changed at the stage stations along with new drivers who traveled both day and night. The bone-jarring journey took 25 days.



### 2 Santa Fe National Historic Trail

In Missouri, William Bucknell, an early-day trader, in 1821 established the Santa Fe Trail which would eventually become the anchor route that connected with other military roads and historic Spanish trails that linked Santa Fe with Texas, Utah, Colorado, New Mexico, Arizona, and Nevada to the gold rush routes to California.

The trail begins at Franklin, MO, where the early-day traders loaded the trade goods they would sell in Santa Fe. Once the wagons were loaded, they traveled south to Boonville. Today's trail travelers can follow the route from Boonville to Marshall on MO 41, then west to Independence on US 24, and southwest to Olathe, KS on I-35, then follow US 56 west to Baldwin City, Council Grove, McPherson, Great Bend and Dodge City. The Mountain Branch of the trail continues to Bent's Old Fort National Historic Site just east of La Junta CO on US 50. The trail turns south at Trinidad on I-25 and proceeds over Raton Pass, NM, and then southwest to Santa Fe on US 64. The Cimarron Cutoff route goes from Dodge City, KS on today's US 56 and heads southwest across the western tip of the Oklahoma panhandle to Clayton and Springer NM, then follows I-25 into Santa Fe.



### 3 Fort Smith-Santa Fe Trail

Josiah Gregg, a Santa Fe trader pioneered a trail route between Fort Smith/Van Buren, AR and Santa Fe in 1839, primarily along the north bank of the Canadian River. When the Gold Rush to California began in 1849, many emigrants followed the remnants of the trail. Today's travelers can travel near the route on I-40 from Fort Smith to Sallisaw, Henryville, and Shawnee to Oklahoma City. It continues west to Amarillo across the Texas panhandle to Tucumcari and Santa Rosa, NM to Santa Fe.



### 4 Fort Smith-El Paso Trail

Established in 1847, the trail proceeded from Fort Smith, near today's I-40 to McAlister, OK then went southwest to Sherman, TX near US 69, then continued near US 287 northwest of Fort Worth to Fort Belknap and Fort Chadbourne near I-20 to Big Spring, Midland, and Odessa to Pecos, TX, then northwest near US 285 and west on US 180 to El Paso. After escorting a party of gold seekers from Fort Smith to Santa Fe in 1849, Capt. Randolph B. Marcy blazed this trail on his return trip back to Fort Smith.



### 5 The Mormon Battalion

The Mormon Battalion followed a number of Southern Trails to California, and established Cooke's Wagon Road

The Mormon Battalion was a trail-blazing unit of the Army of the West that pioneered a new trail/road to California in 1846-47. Some 500 members of the Battalion enlisted for one year during the Mexican-American War. Their 2,000+ mile journey began at Council Bluffs, IA in mid-July, 1846. Led by Captain James Allen, the Battalion proceeded along the Missouri River to Fort Leavenworth, KS, where it was outfitted. Then led by Andrew Jackson Smith, it traveled across Kansas to Santa Fe, where Lieutenant Colonel Philip St. George Cooke took command and the Battalion continued on to Albuquerque. The Battalion headed south along the Rio Grande River on the El Camino Real de Tierra Adentro Trail near today's I-25, then traveled southwest creating what became known as Cooke's Wagon Road, a road that linked southern California with the then United States, following the current US-Mexico border west to the San Pedro River before continuing to Tucson where it joined the Juan Bautista de Anza Trail west to California.

Over 30 women and over 40 children accompanied the Battalion from Council Bluffs to Santa Fe. Near Phoenix, the Akimel O'odham (Pima) and Piipaash (Maricopa) tribes traded with the exhausted Battalion from December 21-24, 1846. Continuing west, the Battalion used axes and other hand tools to chip away stones to get their wagons through Box Canyon. Finally, on January 29, 1847, the Battalion reached San

Diego. The following day Colonel Cooke wrote that the Battalion had created a wagon road "of great value to our country" and that "history may be searched in vain for an equal march of infantry."



### 6 Upper Emigrant Road in Texas

Major Robert S. Neighbors set out in 1849 to build a wagon road between Galveston, Houston, Austin, and northwest to Brady and west to Fort Stockton. The road continued northwest to the Pecos River and crossed Texas Guadalupe Mountains to Hueco Tanks and today's US 61/180 before dropping to El Paso on the Rio Grande River. Upon reaching El Paso, emigrants turned north along the river to join the Southern Trail at Garfield, NM. Galveston served as a primary "Jumping Off" point for those going west on the Upper Emigrant Road in Texas.



### 7 Lower Emigrant Road in Texas

The Army Corps of Engineers set out in 1849 to locate a road for military and commercial purposes between San Antonio and El Paso where it linked up with the Oxbow Trail (the Butterfield Overland Trail). The trail route today goes northwest along the Rio Grande River to Del Rio near today's US 90, then proceeds northwest on US 285 to Fort Stockton and Pecos and continues west to El Paso roughly following US 90.



### 8 The San Antonio-San Diego Mail Line

This early mail service, also known as the Jackass Mail, was the earliest route used by the Overland Stagecoach and mail operation from Missouri to California from 1857-1861. The Mail Line

was created, organized and financed by James Birch, head of the California Stage Company. Birch was awarded the first overland contract for overland service on "The Southern Route", which was designated as Route 8076. The contract required semi-monthly service with four-horse coaches scheduled to leave San Antonio and San Diego on the 9th and 24th of each month. The trip was expected to take 30 days. The service was later supplanted by the Butterfield overland mail operation.



### 9 El Camino Real de Tierra Adentro National Historic Trail

In 1598, the "Royal Road of the Interior" was an early trade route into the United States. Starting from Mexico City and continuing north for 1,600 miles, the trail linked Spain's colonial capital with its northern frontier in New Mexico. This historic trail was traversed by ox carts, mule wagons, and on foot and brought settlers into New Mexico. Many of the trail's campsites later became the cities or towns of the Rio Grande Valley. In what is now West Texas and New Mexico, the trail stretched from El Paso to Las Cruces; Socorro, Belen, Albuquerque, and Santa Fe. Today's Interstate 25 largely follows the trail north from Las Cruces along the Rio Grande Valley. The route features an array of state parks, scenic vistas, national forests, historic sites and ancient pueblos and mesas.

Important Bureau of Land Management sites along the trail include Yost Draw, a 15-mile trail where you can walk where thousands of people, wagons, and livestock traveled into New Spain, which was to become New Mexico. Near Truth or Consequences. Go to: [www.blm.gov/visit/yost-draw](http://www.blm.gov/visit/yost-draw); Point of Rocks, was an important landmark travelers depended on as they made their way through the desert. Near Las Cruces. Go to [www.blm.gov/visit/point-of-rocks](http://www.blm.gov/visit/point-of-rocks); Historic Fort Craig, established in 1854 was one of the largest and most important frontier forts in the West. 35 miles south of Socorro. Go to: [www.blm.gov/visit/fort-craig-historic-site](http://www.blm.gov/visit/fort-craig-historic-site)

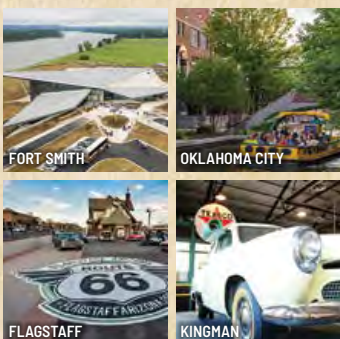
In Las Cruces, see Old Mesilla Village, a famous stop along both the El Camino Real and the Butterfield Overland Trail, and the La Posta de Mesilla, at one time a stage station on the Butterfield Trail. Just outside of Las Cruces is the New Mexico Farm & Ranch Heritage Museum. In Socorro, you can see the Old San Miguel Mission in the plaza which was built around 1626. Socorro is also home to New Mexico Tech and the New Mexico Bureau of Geology Mineral Museum, a world class attraction.

For more information on the El Camino Real, go to: [www.blm.gov/visit/el-camino-real-nht](http://www.blm.gov/visit/el-camino-real-nht) or you can go to the New Mexico Public Lands Info Center at 301 Dinosaur Trail, Santa Fe, 505-954-2002, [www.publiclands.org](http://www.publiclands.org).



### 10 Old Spanish National Historic Trail

Originally was a pack trail from Santa Fe to Los Angeles that was used primarily by traders from 1830-1848. It followed several variant routes through New Mexico, Colorado, Utah, Arizona, and California. It became a National Historic Trail in 2002. Beginning in 1848, the Mormons converted the western part of the trail into a wagon road from Salt Lake City to southern California. Today's trail travelers will enjoy en route attractions and parks along the route, traveling from Santa Fe to Farmington and continuing north to Durango, Colorado and northwest past Mesa Verde National Park on today's US 191 to Monticello, Utah, east of Canyonlands National Park, Arches National Park and Moab to I-70 and turn northwest to Richfield. From Richfield the trail continues southwest on I-15 to Cedar City and Zion National Park, then on to Las Vegas and nearby Tule Springs Fossil Bed National Monument to Barstow and Los Angeles.



### 11 Beale Wagon Road

Fort Smith, AR to Los Angeles, CA

In 1857, Edward Beale was appointed superintendent of a governmental survey for a military wagon road from New Mexico to the Colorado River. This wagon road was then extended by becoming the Mojave Road crossing the Mojave Desert to Barstow and Los Angeles. He organized a second survey in 1859 between Fort Smith and Albuquerque. The general alignment of Beale's road was later followed by the Santa Fe Railroad, then U.S. Route 66 (which then became today's Interstate 40).

Today's travelers have today's primary and interstate highways to head West from Fort Smith to Shawnee and Midwest City on I-40 to Oklahoma City, West to Weatherford and Elk City to Shamrock, TX, and on to Tucumcari, Santa Rosa and Albuquerque, NM. The Beale Wagon Road continued near today's I-40 across Arizona to Flagstaff and Kingman, then on to Barstow and San Bernardino, CA, then southwest near I-15 to Las Angeles.



### 12 The Juan Bautista de Anza National Historic Trail

On Monday morning, October 23, 1775, at the Royal Presidio of San Ignacio de Tubac 45 miles south of today's Tucson, Lieutenant Colonel Juan Bautista de Anza gave the command, "Everybody mount!" and his column of soldiers, vaqueros, muleteers, aids, servants and pioneers took to the saddles, ready to begin Spain's first major expedition to settle California.

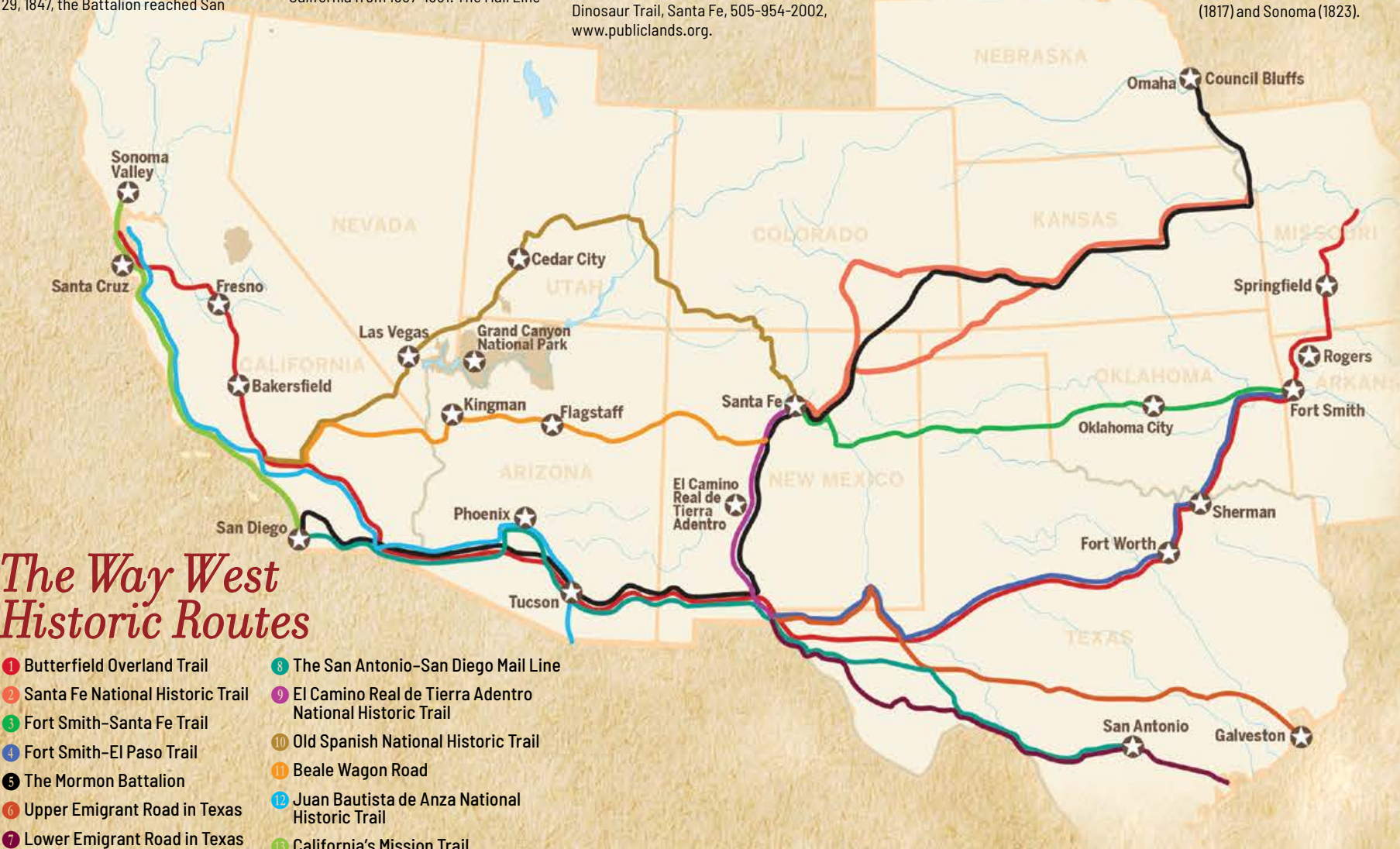
The Tubac Historical Presidio State Park is south of Tucson on I-10 near Nogales. It is the oldest Spanish Fort and Arizona's first state park. The Park sets the stage for the attractions visitors will see as they follow the Anza Trail to Tucson on today's I-19, and continues west on I-8 to Yuma, AZ and Calexico, CA. Trail travelers should then go north on CA 78 and 70 past the Anza-Barrego Desert State Park to Temecula, then I-215 to Riverside and west to Los Angeles on I-10. Here the Anza Trail links with today's US 101 to Oxnard. Santa Barbara and Solvang, then goes north to Santa Maria, San Luis Obispo, King City, San Jose and San Francisco. Wherever the trail went, settlement followed, establishing the culture and ambiance visitors can experience today.



### 13 California's Mission Trail

The 21 missions that comprise California's Historic Mission Trail are all located on or near Highway 101, which roughly traces El Camino Real (The Royal Road) named in honor of the Spanish monarchy which financed the expeditions into California in the quest for empire. California's historic missions were located on the trail in such a way that they were spaced a day's walk from each other.

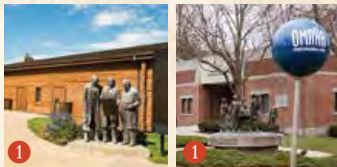
Beginning with the establishment of the San Diego de Alcalá Mission in 1769, the missions are located at San Luis Rey San Juan Capistrano (1798), San Gabriel (1771), San Fernando (1797), San Buena Ventura (1782), Santa Barbara (1786), Santa Ines (1804), La Purisima (1787), San Luis Obispo (1772), San Miguel (1797), San Antonio (1771), Soledad (1791), Carmel (1770), Santa Cruz (1791), San Juan Bautista (1797), Santa Clara (1777), San Jose (1797), Dolores (1776), San Rafael (1817) and Sonoma (1823).



## The Way West Historic Routes

- 1 Butterfield Overland Trail
- 2 Santa Fe National Historic Trail
- 3 Fort Smith-Santa Fe Trail
- 4 Fort Smith-El Paso Trail
- 5 The Mormon Battalion
- 6 Upper Emigrant Road in Texas
- 7 Lower Emigrant Road in Texas
- 8 The San Antonio-San Diego Mail Line
- 9 El Camino Real de Tierra Adentro National Historic Trail
- 10 Old Spanish National Historic Trail
- 11 Beale Wagon Road
- 12 Juan Bautista de Anza National Historic Trail
- 13 California's Mission Trail

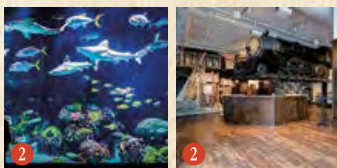




### Mormon Battalion

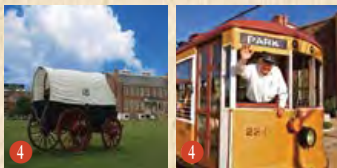
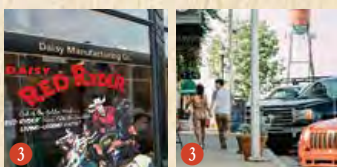
1 **Council Bluffs, IA** » I-80 and I-29. Two historical markers and a walking path at the Iowa School for the Deaf are located at the sites of the 1846 **Grand Encampment of Mormon Pioneers** and the **Mormon Battalion Mustering Grounds**. The Mormon Battalion were enlisted during the Mexican-American War and marched a 2,000+ mile trail across the American southwest to San Diego. **The Kanesville Tabernacle** has exhibits and a film on the journey and achievements of the Mormon Battalion. Go to: [churchofjesuschrist.org/visitkanesvilletabernacle](#)

2 **Omaha, NE** » I-80. The **Mormon Trail Center at Historic Winter Quarters** features interactive exhibits, artwork, reconstructed settings, artifacts and a film on the Mormon Trail pioneers, the Mormon Battalion, and the Historic Winter Quarters of 1846-48. Go to: [churchofjesuschrist.org/visitmormontrailcenter](#)



### Missouri

3 **Springfield** » US 65 and I-44. On the Butterfield Overland Trail, Springfield today has great attractions that bring alive the Old West, the Civil War and the history of transportation. The **History Museum on the Square** features six main galleries in the historic downtown area. The C-Street Historic District is a haven for shoppers with art galleries, boutiques, antique stores, entertainment and local eateries. Other heritage attractions include the Air and Military Museum of the Ozarks, Railroad Museum of the Museum, the Route 66 Car Museum and the Wilson's Creek National Battlefield. At the home of Bass Pro Shops, visitors won't want to miss **Johnny Morris' Wonders of Wildlife National Museum & Aquarium** featuring lifelike displays of wildlife the world over and thousands of fish in huge aquariums. There are also many local wineries, micro-breweries and distilleries in the area. Go to: [SpringfieldMO.org](#).

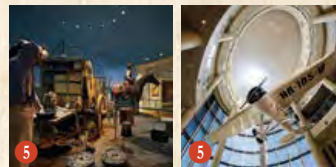


### Arkansas

4 **Rogers** » I-49. On the Butterfield Overland Trail route, Rogers offers today's trail travelers memorable museums and trendy shopping surrounded by breath-taking Ozark scenery and historic sites. Favorite local museums in the area include the Daisy Airgun Museum, the Rogers Historical Museum and the Shiloh Museum of Ozark History. The inspiring **Crystal Bridges Museum of American Art** combines art and architecture with the natural beauty of nature trails. The nearby Pea Ridge National Military Park is the nation's largest intact Civil War Battlefield. War Eagle Cavern on the shores of Beaver Lake offers wondrous sights including an underground waterfall. Families will enjoy the splash fun at the Rogers Aquatics Center. Shoppers can choose from the brick-lined streets of **Historic Downtown Rogers** with its gourmet restaurants and charming boutiques, or Pinnacle Hills Promenade, the area's top destination shopping center. Go to: [VisitRogersArkansas.com](#).

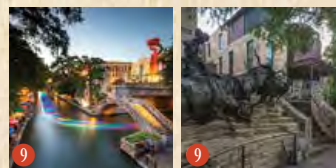
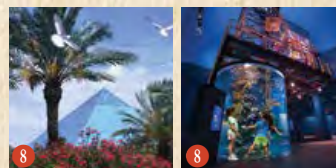
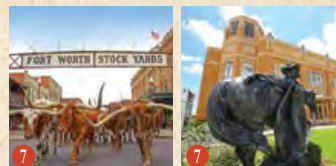
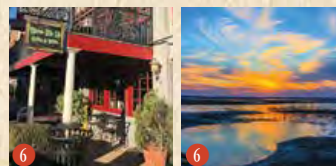
5 **Fort Smith** » I-540, I-40, and I-49. On the Butterfield Overland Trail and the Beale Wagon Road. Once an historic "Social Club," today Miss Laura's Visitor Center is a good place to start any tour with information on all the great places to visit. The **Fort Smith National Historic Site** features the parade grounds and restored buildings of the famed fort of the War with Mexico and the Civil War and along the historic Trail of Tears. The park includes the historic barracks, commissary, the courthouse of Judge Parker, jail buildings and gallows. The **Fort Smith Museum of History** has over 40,000 artifacts chronicling the city's history. The Fort Smith Trolley Museum features railcars and even a touring 1926 electric streetcar. More extensive and scenic rail tours are offered by A & M Railroad Excursions. The Park at West

End is located in the downtown area and Creekmore Park, located a little farther east, are picturesque parks offering seasonal fun for the whole family. The area also includes four wineries and three casinos. Go to: [FortSmith.org](#).



### Oklahoma

6 **Oklahoma City** » I-40, I-35 and I-44. On the Fort Smith - Santa Fe Road and on the Beale Wagon Road. The **National Cowboy and Western Heritage Museum** brings to life the histories and cultures of the American West with an outstanding collection of fine art, artifacts and programs. The Oklahoma History Center showcases the state's unique history from the late 1600s to today. The **Oklahoma City National Memorial and Museum** features state-of-the-art technology, hands on exhibits and an inspiring memorial. The Oklahoma Hall of Fame at the Gaylord-Pickens Museum celebrates the character and spirit of Oklahoma. Other great attractions include the 45th Infantry Division Museum, the Museum of Osteology and the Oklahoma Museum of Art, which features one of the world's largest collections of Chihuly glass. The Science Museum of Oklahoma features eight acres of hands-on exhibits for the whole family. The **Bricktown Entertainment District** offers a fun mix of heritage, dining and entertainment connected by the scenic Bricktown water taxi service. Go to: [VisitOKC.com](#).



### Texas

7 **Sherman** » US 82 and US 75. On the Butterfield Overland Trail. The lifelike displays at the **Harber Wildlife Museum** feature big game animals and African artifacts. Visitors to the nearby **Hagerman National Wildlife Refuge** can view nature up close with 338 species of birds, 36 species of mammals and 60 species of reptiles and amphibians. The **Sherman Jazz Museum** is a "must-see" for any Jazz enthusiast with collections from Dizzy Gillespie, Duke Ellington and many more. A **Touch of Class Antique Mall** on the historic Sherman Downtown Square is an antique shopper's dream with 38,000 square feet and three floors of treasures and the Grayson County and Outlaw Trails Museum. The **Sherman Museum**, housed in a historic Carnegie Library, features the Texoma Time Traveler exhibit, Dino Days, and more. During summer months, the **Splash Pool** waterpark offers cool fun for the whole family. Also, check out **903 Brewers**, an award-winning microbrewery. Go to: [ShermanTX.org](#).

8 **Fort Worth** » At the crossroads of I-35W and I-20. Just off the Butterfield Overland Trail route. The American West comes alive with the twice-daily longhorn cattle drive down the streets of **Fort Worth's National Historic Stockyards District**. The Stockyards has rodeo every Friday and Saturday night at the 1908 Cowntown Coliseum, the recreated Pawnee Bill's Wild West Show on Saturday afternoons, plus authentic western fashion and stores and delicious barbecue. For nightlife, nothing matches **Billy Bob's Texas**, the world's largest honky-tonk, for concerts, dancing and fun. Fort Worth's **Cultural District** features world-renowned museums with collections ranging from American masterpieces to modern to Michelangelo's first painting, at the Kimbell. The Cowgirl Museum and Hall of Fame honors women of the West—the only museum of its kind. Downtown Fort Worth's **Sundance Square** is a 35-block shopping district with the three-story Chisholm Trail Mural in the central Plaza. Fort Worth also has 10 other great shopping districts including Clearfork for luxury brands and Tanger Outlet. Go to: [FortWorth.com](#).

9 **Galveston** » On the Gulf of Mexico south of Houston on I-45. On the historic Texas Upper Emigrant Road. Galveston Island features 32 miles of relaxing beaches, family-friendly attractions, Texas Seaport history, including the **1877 Tall Ship Elissa**, plus great dining and picturesque lodging, and one of the largest concentrations of Victorian architecture in the country. The **Bryan Museum** has an outstanding collection of artifacts, artwork and documents relating to Texas and the American West. Other historic buildings include the 1861 Custom House, 1892 Bishop's Place, The Grand 1894 Opera House and the 1895 Moody Mansion. The Galveston Island **Pleasure Pier** ranks among the top-five seaside amusement parks. **Moody Gardens** features the Aquarium Pyramid, the Rain-forest Pyramid, the Discovery Pyramid with interactive exhibits for kids, a Ropes Course and Zip Line for thrills. Other great attractions include Schlitterbahn Water Park, Galveston Naval Museum, the Galveston Railroad Museum, and the Ocean Star Offshore Drilling Rig and Museum. Go to: [Galveston.com](#)

10 **San Antonio** » At the crossroads of I-35 and I-10. On the historic Texas Lower Emigrant Road. The **Alamo Mission** founded in 1718 was the site of the 1836 Texas Revolution. Today, the 4.2-acre complex features interactive tours and exhibits, reenactments and the scenic Alamo Gardens. A short walk leads to the world-famous **San Antonio River Walk**, a 15-mile urban waterway surrounded by great restaurants, historic districts and great shopping. San Antonio Missions National Historical Park, which along with the Alamo is the first **UNESCO World Heritage Site** in Texas, includes Spanish Mission compounds built in the 18th Century. **Market Square** is a three-block outdoor plaza offering visitors the sights, sounds and flavor of Old Mexico. The **San Antonio Museum of Art** displays ancient Egyptian, Greek and Roman art, while the McNay Art Museum specializes in 19th and 20th Century art. The **Briscoe Museum of Western Art** houses art and artifacts reflecting the history of the American West. The **Witte Museum** is dedicated to telling the stories of Texas from prehistory to the present. **SeaWorld San Antonio** provides unforgettable marine life encounters, a water park and thrill rides. **Six Flags Fiesta Texas** has coasters, a water park and nightly entertainment that includes fireworks. Go to: [VisitSanAntonio.com](#).

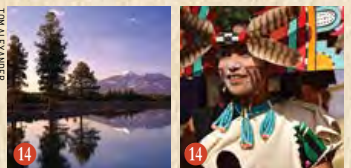
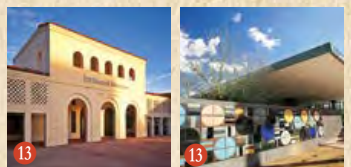


### New Mexico

11 **Santa Fe** » I-25. On the Santa Fe Trail, Cooke's Wagon Road, the El Camino Real de Tierra Adentro Trail, the Fort Smith-Santa Fe Trail and the Old Spanish Trail. Santa Fe has been the hub for many trails and travelers since the 17th Century. Today the city is a mecca for art, culture, unique shopping treasures, and delicious New Mexican cuisine. The **Downtown Plaza** area has the look and feel of a classic Spanish Plaza with the New Mexico History Museum, the New Mexico Museum of Art, the Georgia O'Keeffe Museum, great shopping, dining and local Native artisans all within easy walking distance of each other. The **Museum Hill** area features the Museum of Indian Arts and Culture, the Museum of International Folk Art, the Wheelwright Museum of the American Indian and the Museum of Spanish Colonial

Art. The **Railyard and Guadalupe Districts** feature contemporary art galleries and great restaurants in the classic setting of 19th century depot buildings. Go to: [SantaFe.org](#).

12 **New Mexico's El Camino Real de Tierra Adentro National Historic Trail** The historic "Royal Road of the Interior" runs from Mexico City north to Santa Fe on or just east of I-25. In the **Las Cruces** area visitors get a feel for settlement along the trail at the Mesilla Plaza and Historic District, the Mesquite Historic District and the Dona Ana Village Historic District. At the nearby Fort Selden Historic Site visitors can walk a portion of the historic trail. North of **Truth or Consequences** is the Fort Craig National Historic Site. **Socorro** is the home of the San Miguel Mission founded in 1598. Halfway between Socorro and Belen at Exit 169 is the Sevilleta National Wildlife Refuge with nature trails and a visitor center. The **Albuquerque** area includes the historic Gutierrez-Hubbell House and the Albuquerque Museum of Art and History. South of **Santa Fe** is the La Bajada Mesa, one of the best preserved and historically significant portions of the trail. A great place to end ... or start your trail journey is at the festive **Santa Fe Plaza** and the **Palace of Governors** with history, artisans and fine dining nearby. Go to: [CaminoRealcarta.org](#).



13 **"Must see" Southern Arizona Parks**—Southeast of Willcox on AZ 186, hit the trails at **Chiricahua National Monument** and gaze in wonder at the park's 100-foot-tall rock spires, which formed over 27 million years ago. At **Kartchner Caverns State Park**, southwest of Benson on AZ 90, you can tour a living limestone cave with the world's largest stalactite formation. Split east and west of Tucson, **Saguaro National Park** is the best place to see giant saguaro cactus that reach as high as 50-feet and can live more than 200 years. Go to: [VisitArizona.com](#).

14 **Phoenix** » I-10 and I-17. On the Butterfield Overland Trail, the Juan Bautista de Anza Trail, and Cooke's Wagon Road. Arizona's capital city is a showcase of modern art, ancient culture and vibrant nightlife. The world-renowned **Heard Museum** showcases Native American culture and art and has live performances such as the World Championship Hoop Dance Contest. Half a mile south, explore an extensive collection of classic and contemporary art

at the **Phoenix Art Museum**, or go north to see over 800 instruments from around the world at the Musical Instrument Museum. If you're up for some nightlife, there's no better spot than **Roosevelt Row**, a walkable art district featuring galleries, studios, street art, boutiques, bars and restaurants. And no auto tour would be complete without a visit to the **Penske Racing Museum**. In nearby **Scottsdale**, Old West history meets shopping mecca, where **Western Spirit: Scottsdale's Museum of the West** and the **Scottsdale Museum of Contemporary Art** beckon visitors alongside shops, boutiques and restaurants. Go to: [VisitPhoenix.com](#).

15 **Flagstaff** » I-17 and I-40. On the Beale Wagon Road and Route 66. With its ponderosa pine forests, winter ski resort and mountain town-meets-college town vibe, Flagstaff pleasantly surprises visitors with its 7,000' elevation. Take a walk, bike or grab a Segway to tour the **Historic Downtown and Railroad District**, featuring **Riordan Mansion State Park**, unique stores,

creative galleries, and craft breweries operating in historic buildings. If you love stargazing, this Dark Sky-certified town is also home to the **Lowell Observatory**, where Pluto was discovered in 1930. Visitors can peer through six different telescopes and enjoy multimedia shows, interactive exhibits and demonstrations. Nature buffs can experience by foot, bike, car or shuttle. More adventurous visitors can opt to tour the Canyon by mule, horseback, helicopter or train. The less crowded **North Rim** offers a quieter experience but is closed due to weather from October 15-May 15. On the west side, the **West Rim** is best known for the Skywalk, a glass-bottom walkway 4,000 feet above the Canyon floor. Visitors can also enjoy rafting the Colorado, horseback riding and zip lining at Hualapai Ranch. Go to: [VisitArizona.com](#).

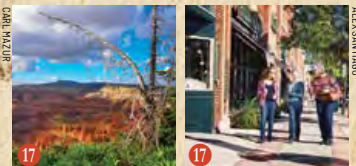
16 **Grand Canyon National Park**» Grand Canyon adventures begin at the South Rim's **Grand Canyon Village**, accessible by free

shuttle from Tusayan, north of Williams on AZ 64. The traveler-friendly **South Rim** features hotels, restaurants, a general store, laundry and shower facilities. You'll also find incredible scenic views, which you can experience by foot, bike, car or shuttle. More adventurous visitors can opt to tour the Canyon by mule, horseback, helicopter or train. The less crowded **North Rim** offers a quieter experience but is closed due to weather from October 15-May 15. On the west side, the **West Rim** is best known for the Skywalk, a glass-bottom walkway 4,000 feet above the Canyon floor. Visitors can also enjoy rafting the Colorado, horseback riding and zip lining at Hualapai Ranch. Go to: [VisitArizona.com](#).

17 **"Must see" Northern Arizona Parks**—North of Chambers on US 191, you'll find **Canyon de Chelly National Monument** on Navajo Nation Tribal Lands, with multi-hued canyon walls that showcase hundreds of ancient pueblo ruins. **Petrified Forest National Park**, on I-40/US 66 west of Chambers, features

the world's largest and most colorful collection of 200-million-year old petrified wood and fossils. **Glen Canyon and Lake Powell**, north of Flagstaff on US 89, is one of the most popular lakes in Arizona set amid deep canyons and spectacular scenery. Go to: [VisitArizona.com](#).

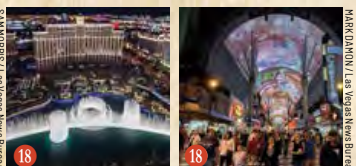
18 **Kingman** » I-40. On the Beale Wagon Road and Route 66. Every visit to Kingman should start at the **Historic Powerhouse** in Historic Downtown Kingman. Built in 1907, today it houses the **Kingman Visitor Center**, along with the **Historic Route 66 Museum** and the **Route 66 Electric Vehicle Museum**—filled with giant murals, life-sized dioramas and authentic artifacts bring to life the early days of travel on "The Mother Road." Over at the Historic Railroad Depot, the **Kingman Railroad Museum** displays railroad artifacts and model train layouts, and the nearby Locomotive Park displays famed steam engine #3759. Showcasing the history of the area, the **Mohave Museum of History and Arts** features exhibits covering prehistoric times and the towns mining and ranching history. And if you're a fan of local brews be sure to stock up on award-winning vintages at **Celia Winery** and enjoy a tour and tasting at **Desert Diamond Distillery**. Go to: [GoKingman.com](#).



### Utah

19 **Cedar City** » I-15. On the Old Spanish Trail. Visitors can experience the days of the Old Spanish Trail, pioneers and iron ore miners at **Frontier Homestead State Park Museum** featuring historic buildings, wagons and artifacts, period reenactors and interactive exhibits. Nearby **Cedar Breaks National Monument** features a 2,500-foot deep basin with canyon walls in vivid, multi-colored hues. Cedar City can also serve as the gateway and "base camp" for visits to **Zion National Park**, **Bryce Canyon National Park** and **Dixie National Forest**. **Kanarra Falls** is a beautiful slot canyon hike with stunning waterfalls. The plays of William Shakespeare and other classics are performed nightly from June through October at the Tony Award winning **Utah Shakespeare Festival** at the Beverly Center for the Arts. The

Southern Utah Museum of Art displays the work of regional artists and a permanent collection of National Park paintings. Brian Head Resort offers snow-skiing and family-friendly winter fun from November through April and summer mountain biking, hiking and special events on the weekends in the summer. Go to: [VisitCedarCity.com](#).



### Nevada

20 **Las Vegas** » I-15 and US 93 and US 95. On the Old Spanish Trail. More than 150 years ago a spring-fed creek flowed through the Las Vegas Valley which created an oasis in the desert half-way between Salt Lake City and Los Angeles. At the world-class **Spring Preserve** visitors can experience museums, including the amazing **Nevada State Museum**, galleries, outdoor events, a colorful botanical garden, and interpretive trail system at the birthplace of Las Vegas, named by the Spanish for "the meadows." At the **Old Las Vegas Mormon Fort State Historic Park** trail travelers can see a multitude of artifacts, a Visitor Center, and a Spanish Trail marker inside this historic adobe fort. Nearby Las Vegas landmarks include the colorful **Fountains of Bellagio**, the **Las Vegas Strip** with its dazzling array of themed casinos, and the nightly sight and sound sensation of the **Fremont Street Experience**. For incredible views of the Strip and Nevada desert there is the Stratosphere Tower, the Eiffel Tower Viewing Deck, and the High Roller, the world's biggest observation wheel. Specialty museums include the fascinating 30-acre **Clark County Museum**, the **Mob Museum**, the **Neon Museum** with classic Las Vegas neon signs, the **National Atomic Testing Museum**, and **Madame Tussauds**—Las Vegas Wax Museum. Family attractions include SeaQuest Las Vegas, Wet and Wild Las Vegas, Cowabunga Bay Water Park and Siegfried & Roy's Secret Garden and Dolphin Habitat at the Mirage Casino. Nearby outdoor adventures include **Hoover Dam** and the **Red Rock Canyon National Conservation Area**. Go to: [VisitLasVegas.com](#).



### California

21 **San Diego** » I-8 and I-5. The Mormon Battalion followed a number of Southern Trails, and created Cooke's Wagon Road to California during the Mexican-American War. The **Mormon Battalion Historic Site** is located in Old Town State Historic Park, south of Presidio Park and the I-8/I-5 interchange. Visitors may take a guided interactive video tour that highlights the faith, service and sacrifice of the Mormon Battalion volunteers during their 2,000+ mile journey from Council Bluffs, IA to San Diego in 1846-47. After the tour visitors can see historic artifacts, get a photo of themselves and their group, and enjoy demonstrations of gold panning and brickmaking. **Old Town San Diego State Park** also includes other historical attractions and restaurants. Go to: [churchofjesuschrist.org/visitmormonbattalion](#).

22 **Bakersfield** » CA 99, 58, and 178. On the Butterfield Overland Trail. The **Bakersfield Museum Trail** is a 15-mile

route connecting the city's four main museums. **Kern County Museum** has curated the state's rich heritage with over 60 historic buildings, the **Buena Vista Museum of Natural History & Science** with a large collection of fossils, the **California Living Museum**, home to endangered California animals and plants, and the **Bakersfield Museum of Art** offering a visual arts spectrum. Visitors can enjoy the all-American **Bakersfield Sound** at **Buck Owens' Crystal Palace** featuring the country music star's memorabilia, a restaurant and a live country music performance theater with the top acts of today. The **Downtown Arts District** showcases local performing and visual arts, and the **Downtown Antique District** features inviting malls and boutiques offering nostalgic collectibles and the last operating Woolworth's lunch counter in the nation. Outdoor adventures include the **Kern River Parkway Trail** with 30 miles of scenic bike trails and whitewater rafting tours on the Kern River. Go to: [VisitBakersfield.com](#).

23 **Fresno** » CA 99, 41and 180. On the Butterfield Overland Trail. Visitors can sample California's fertile Central Valley at **Simonian Farms Old Town** that also features antique exhibits, a Route 66 Shooting Gallery, and an Old West Saloon with daily wine tasting. **Forestreire Underground Gardens** is a fantastic underground retreat built in the early 1900s featuring living quarters and birth-bearing vines and trees growing beneath the earth's surface. The **Fresno Chaffee Zoo** houses a variety of animals in native habitats, including a rain forest and Sea Lion Cove. Other unique attractions include the **Meux Home Museum** home of a Civil War surgeon, the **Kearney Mansion Museum** home of California's "Boson King," and the **Arts America Art Gallery**. Great places to take the kids include the **Island Waterpark**, the family-friendly **Rotary Storyland Playland Amusement Park**, and the **Shinzen Japanese Garden**. Fresno is also the Gateway to Kings Canyon National Park and Sequoia National Park 55-miles east on US 180, and **Yosemite National Park** 92 miles north on US 41. Go to: [VisitFresnoCounty.org](#).

24 **Santa Cruz** » CA 1, 9 and 17. On California's Mission Trail. The **Santa Cruz Mission State Historic Park** on Mission Hill features the only surviving building of the 12th California Mission founded in 1791. The adobe building has been restored to the days when it provided housing for Native American families in the early 1800s. The park grounds include a patio, gardens, exhibits and excellent views of the city. The **Santa Cruz Beach Boardwalk** is a seaside amusement park featuring a classic wood roller coaster, a beautiful old-time carousel, food, and games. Visitors can opt to take a self-guided historic walking tour. Wildlife viewing from the historic Santa Cruz Wharf includes seabirds, seals, sea lions, and other mammals. Pet a friendly shark at the nearby **Seymour Marine Discovery Center** and learn more about the amazing **Monterey Bay National Marine Sanctuary** at the free **Monterey Bay National Marine Sanctuary Exploration Center** located nearby. Both Marine Centers are near **West Cliff Drive**, a scenic three-and-a-half mile stretch of coastline, that is home to the **Santa Cruz Surfing Museum**, hidden beaches, and **Natural Bridges State Park and Beach**. Go to: [VisitSantaCruz.org](#).

25 **Sonoma Valley** » Take US 101 north of San Rafael to CA 37, east to CA 121 at Sears Point, and north to CA 12, On California's Mission Trail. Sonoma is the last and most northerly of the chain of Spanish missions built by Franciscan padres, and is unique in that it was the only one built after Mexico's independence from Spain. The **San Francisco Solano de Sonoma Mission** was completed in 1823. Today the mission has been restored as a part of the California State Parks system and features a museum, lots of atmosphere, a gift shop, and is on the picturesque **Sonoma Plaza**. The Plaza is the perfect place to start or end a day of touring and features old adobe storefronts, sunlit courtyards, historic landmarks and a pleasing mix of restaurants, boutiques, galleries, tasting rooms and hotels. Sonoma Valley is known as the birthplace of California's wine industry and today is home to over 100 wineries. Wine tasting tours are offered by group, by trolley, by bike or by Segway. Sonoma's early days are on display at the **Sonoma Barracks**, **Sonoma State Historic Park** and the **General M.G. Vallejo Home**. Scenic outdoor hiking tours include **Jack London State Historic Park**, **Bartholomew Park** and the **Sonoma Overlook Trail**. Go to: [SonomaValley.com](#).

## Discover America's Great Southwest!



- Use this guide to do some "trail-blazing" of your own. You'll discover these historic trails that helped mold this nation, and experience the cities, towns, states, state and national parks, and the immense lands and horizons of the Great American Southwest and the Golden West. Go adventuring!
- Butterfield Overland Trail
  - Santa Fe National Historic Trail
  - Fort Smith-Santa Fe Trail
  - Fort Smith-El Paso Trail
  - The Mormon Battalion
  - Upper Emigrant Road in Texas
  - Lower Emigrant Road in Texas
  - The San Antonio-San Diego Mail Line
  - El Camino Real de Tierra Adentro National Historic Trail
  - Old Spanish National Historic Trail
  - Beale Wagon Road
  - Juan Bautista de Anza National Historic Trail
  - California's Mission Trail



Discover the

# SOUTHERN TRAILS

AUTO TOURS

## PROGRAM PARTNERS

*This brochure funded in part by our program partners*

### Missouri

**Springfield Convention & Visitors Bureau»**  
SpringfieldMO.org

### Arkansas

**Visit Rogers»** VisitRogersArkansas.com

**Fort Smith Convention & Visitors Bureau»**  
FortSmith.org

### Oklahoma

**Oklahoma City Convention & Visitors Bureau»** VisitOKC.com

### Texas

**Fort Worth Convention & Visitors Bureau»** FortWorth.com

**City of Sherman, Texas»** ShermanTX.org

**San Antonio Convention & Visitors Bureau»** VisitSanAntonio.com

**Galveston Island Convention & Visitors Bureau»** Galveston.com

### New Mexico

**Tourism Santa Fe»** SantaFe.org

**Bureau of Land Management New Mexico State Office»** CaminoRealcarta.org

### Utah

**The Church of Jesus Christ of Latter-day Saints History Department»**

**Omaha, NE»** churchofjesuschrist.org/  
visitmormontrailcenter

**Council Bluff, IA»** "churchofjesuschrist.org/  
visitkanesvilletabernacle

**San Diego, CA»** churchofjesuschrist.org/  
visitmormonbattalion

**Cedar City Brian Head Tourism Bureau»**  
VisitCedarCity.com

### Arizona

**Arizona Office of Tourism»**  
VisitArizona.com

**Visit Tucson»** VisitTucson.org

**Visit Phoenix»** VisitPhoenix.com

**Discover Flagstaff»** DiscoverFlagstaff.com

**Kingman Tourism»** GoKingman.com

### Nevada

**Las Vegas Convention & Visitors Authority»** VisitLasVegas.com

### California

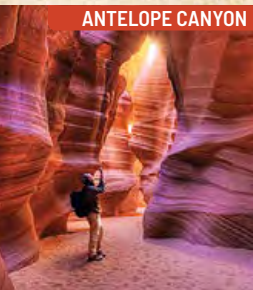
**Visit Bakersfield»** VisitBakersfield.com

**Fresno/Clovis Convention & Visitors Bureau»** VisitFresnoCounty.org

**Visit Santa Cruz County»**  
VisitSantaCruz.org

**Sonoma Valley Visitors Bureau»**  
SonomaValley.com

ANTELOPE CANYON

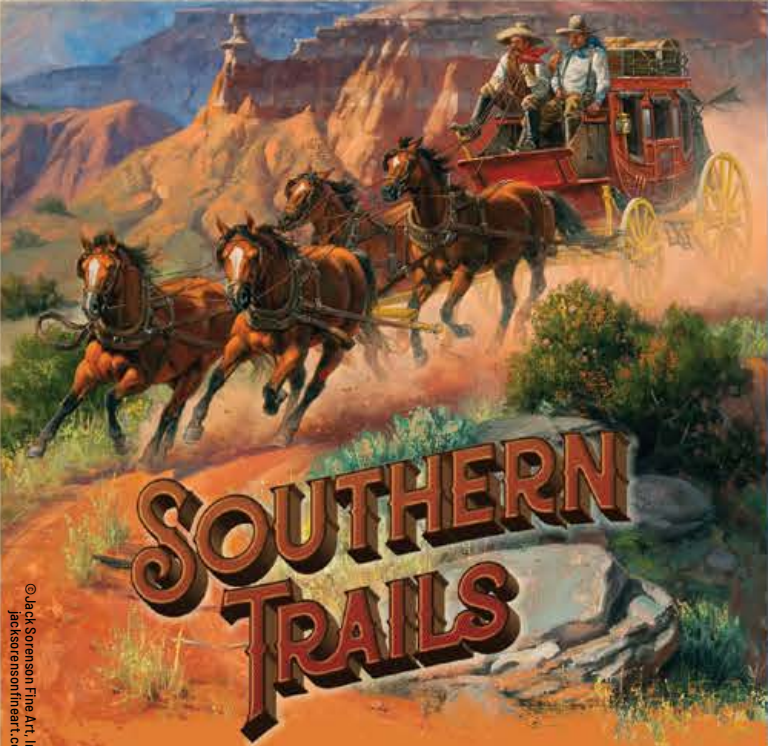


BISBEE



WHITE MESA ARCH





©Jack Sorenson Fine Art, Inc.  
jacksorensonfineart.com

**Missouri « Arkansas « Kansas » Oklahoma » Texas  
Colorado « New Mexico « Arizona » Utah » Nevada » California**

If you enjoy your Southern Trails experience consider becoming a member of the Oregon-California Trails Association so this inspiring history can be preserved for future generations.

An American legacy is at risk. The historic trails trod by pioneers, gold rushers, adventurers, families—people in pursuit of a better life in the West—are under constant threat from development including energy-related projects. Many miles of wagon ruts and swales still exist in silent testimony to those hardy souls who built the nation as we know it today.

Join OCTA and get involved. You can donate to the Save the Trail cause. Your donation will help fund important trail preservation work. You can also donate to

OCTA Specialty Funds for Endowment, Preservation, and Legal Defense of the historic trails. The Oregon-California Trails Association is a 501(c)3 nonprofit organization.

You can also establish a memorial. Funds set up as a remembrance for a family member or friend can further their interest in perpetuity. Memorial contributions to OCTA can be sent directly to OCTA headquarters or through the Network for Good. When you join OCTA you'll also learn about all the opportunities to participate in trail preservation activities. If joining isn't your cup of tea and you'd just like to keep up with what's happening with the trails let us know and tell us a little about yourself.

**Discover America's Great Southwest!  
Go to [OCTA-Trails.org](http://OCTA-Trails.org)**

**Support the preservation work of the Oregon-California Trails Association on behalf of the National Historic Trails. Go to: [www.octa-trails.org](http://www.octa-trails.org) or call us at (816) 252-2276 for more information**